

portfolio

MBA - Matteo Borsetti Arch.

Welcome



Matteo Borsetti is a fully qualified Architect, and ARB (Architects Registration Board) and RIBA (Royal Institute of British Architects) registered in London, UK.

The images presented in this portfolio are the result of the careful work of his creativity and the search for a personalized solution for every client project.

Matteo Borsetti Arch._provide architectural services using technologically superior processes, providing greater value for clients and enhanced design .

His competitive edge is the knowledge of digital-based design resources. He use the Building information modelling (BIM).

The focus of his design is creating a strong visual impact playing with shapes, colours and materials inside a practical and functional space .

He has an extensive range of high quality, design led experience, ranging from developing public buildings and living spaces through to high end residential, offices, theatres, schools, etc..

He also take part in national and international architecture competitions because he love experimenting with contemporary architectural language in every project.

Table of Contents

- 01 BEACH HUTS**
Eastbourne - Sussex
- 02 EXHIBITION HOUSE**
Wandsworth - London
- 03 INFORMATION PAVILION**
Olympic Games - London
- 04 RENOVATED COTTAGE**
Private client
- 05 COTTAGE GARDEN**
Private client
- 06 A NEW SCHOOL OF FINE ARTS**
Paris - France
- 07 THEATRE / AUDITORIUM MANZONI**
Bologna -Italy
- 08 OFFICE BUILDING FAIR**
Bologna -Italy
- 09 FIREPLACE**
Private client
- 10 FAYAT PAVILION**
BAUMA / Munich - Germany
- 11 BENETTON SHOP**
Treviso-Italy
- 12 RICHMOND DISCO/PUB**

Beach Huts

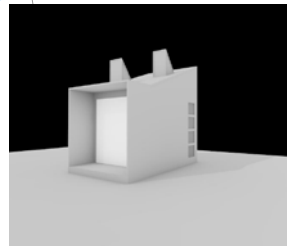
Eastbourne - Sussex



The hut will be available to hire for holidaymakers and Eastbourne residents.

We placed the Hut to the site behind the urban context and in front of the beach.

The main structure is in H Performance Plywood offering full classification and performance in all conditions. The surface that covers the roof instead is in metal pre-patinised zinc as the main entrance frame creates a visual break highlighting instead the living space of the Hut.



3D Model



Interior views



The Hut in the behind urban context of the Royal Parade



Perspective View of the main entrance



North Elevation 1:50
South Elevation 1:50



Perspective View of the rear of the Hut

EASTBOURNE
Borough Council

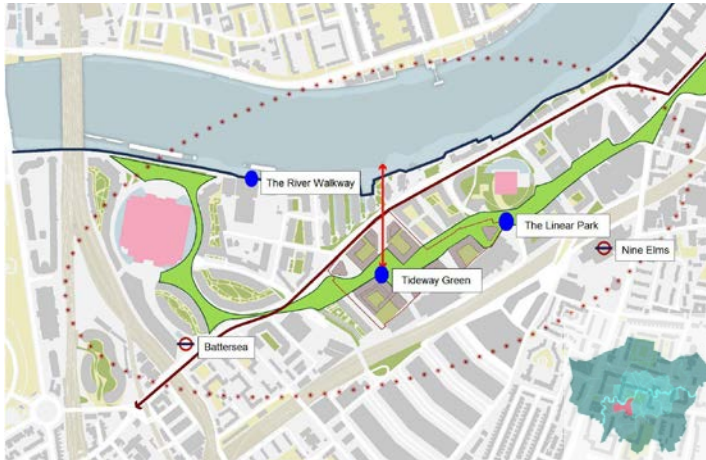


1:2500

This map is based on Ordnance Survey material with the permission of OS, Crown Copyright Eastbourne Borough Council LA 100025879 no further copies to be made.

Exhibition House

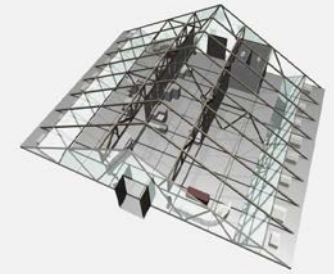
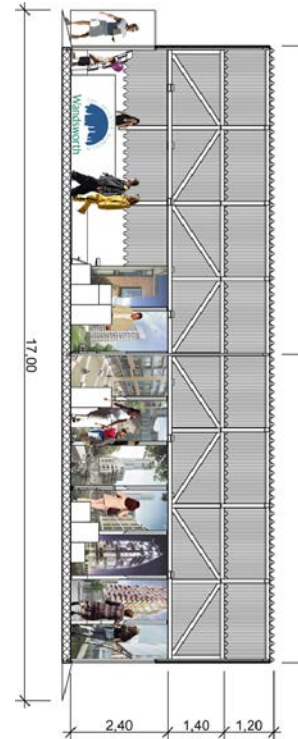
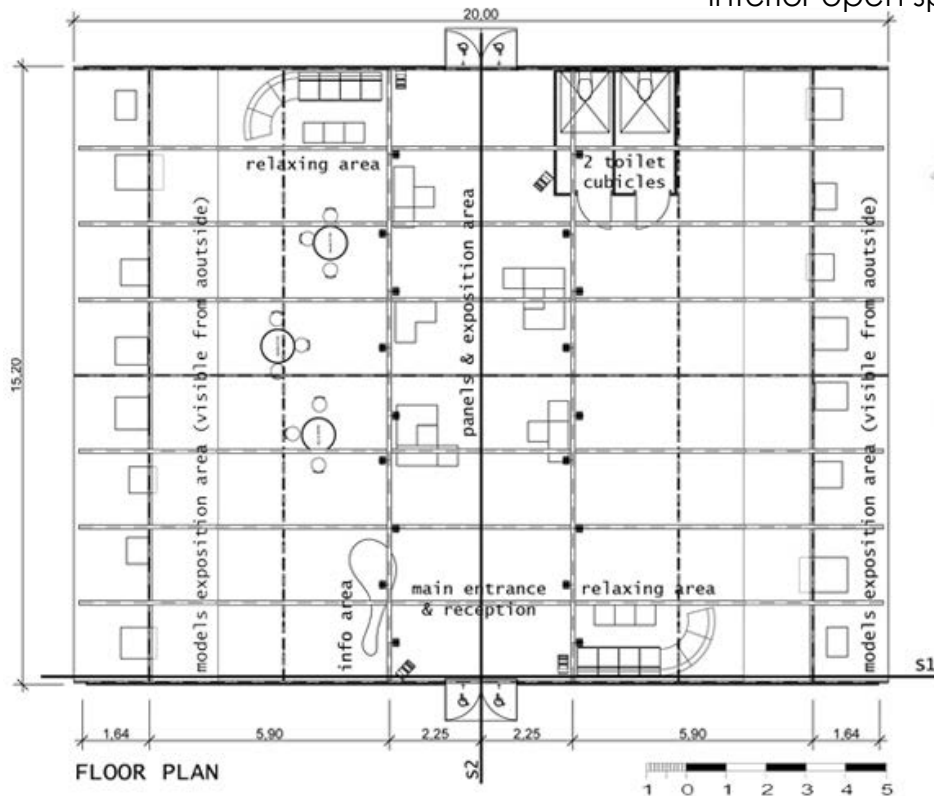
Wandsworth - London



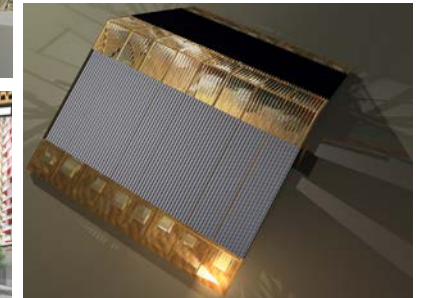
Exterior perspective views

This project is placed at the heart of the Nine Elms regeneration area. Inside the house, visitors can find explanation panels and models of the new projects of this borough.

Based on a modular and repeated timber structure, the assembling of the pieces is very easy, creating a versatile interior open space.



Interior and Exterior views with the timber frame structure.



Information Pavilion

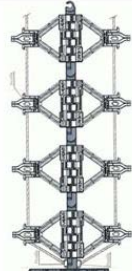
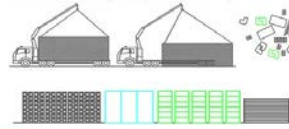
Olympic Games 2012- London



BATYLINE HM TWED Texture



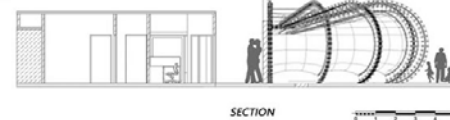
PRECONSTRAINT Texture



wiring detail of columns and anchors to the base piece



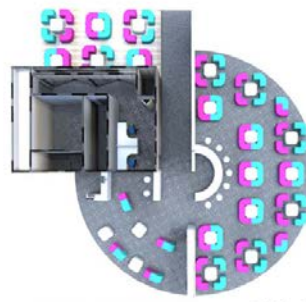
GROUND FLOOR PLAN



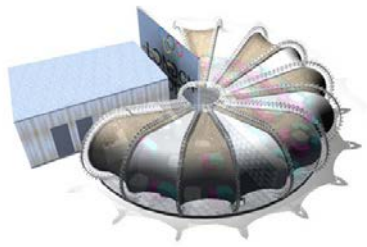
SECTION



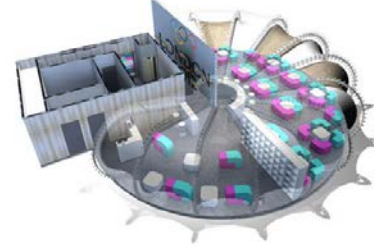
ROOF PLAN



GROUND FLOOR PLAN (FURNISHED)



AXONOMETRIC VIEW (COVERED)



AXONOMETRIC VIEW (COVER VEILED AND FURNISHED)

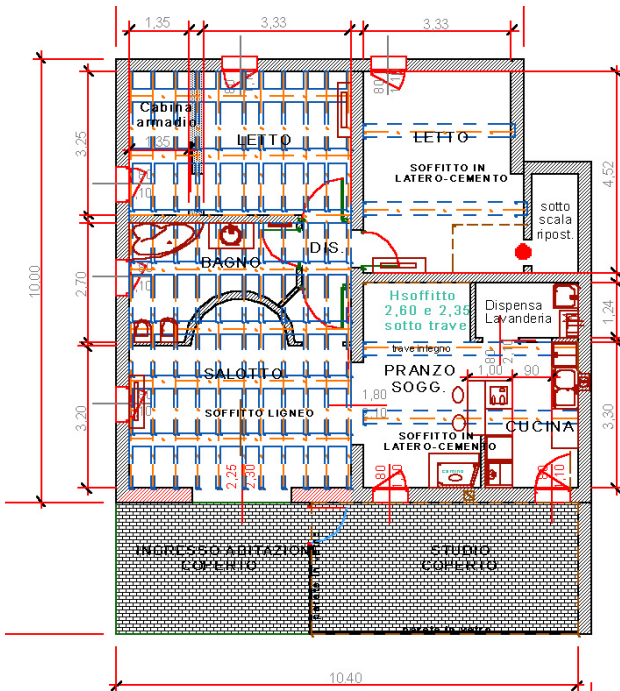
The proposal is a pavilion where the floor is circular shaped , 16 m diameter , with a total height of 4 m and a free height of 2.70 m inside. The main load-bearing frame consists in 13 prefabricated Abs Roller Beams (patented system) attached on the bottom to a steel deck floor for enhanced stability (see drawing in chart 1.1 and 1.2). The radial frame is braced both by the prefabricated prismatic module, which contains the auxiliary Services (facilities, administration, prefabricated toilets and water tanks), and a wall built by a metallic frame cladded with plywood panels, wich also acts emphasizing the entrance ramp.



Renovated Cottage

Private client

We renovated an old farmhouse, we wanted to recover the ancient beams of the ceiling. The doors are all on top a glass surface which show the continuity of the wooden ceiling in this way we have tried to remember the old perception of a single open space (the space occupied by the living room, bathroom and bedroom was originally a barn). The particularity of the project was the desire to create a video projection ephemeral room through the use of sliding curtains and curved walls with a clear reference to Villa Tugendhat designed by the architect Ludwig Mies van der Rohe. Also kitchen Area is attached to the living room with a large sliding glass door, in this way we build a project where each room can form an open or closed space depending on the situation we want to create.



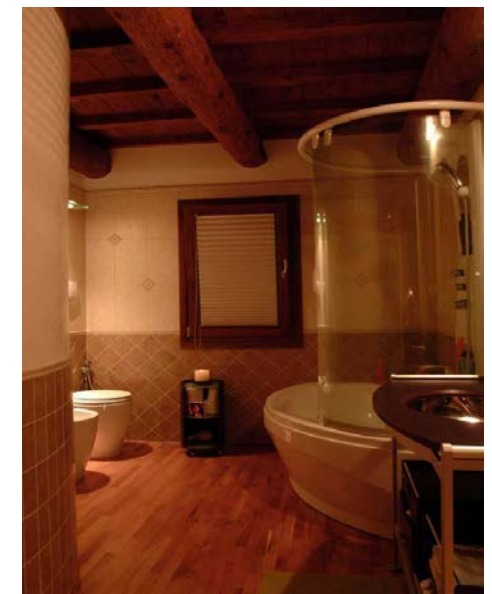
Main Entrance - night view of the living room



The master bedroom with display niches and entry door to the walk-in closet.



Dining kitchen area become a unique space with lounge area.



The bathroom with curved wall and parquet floor.

Cottage Garden

Private client

The same client has instructed the arrangement of the garden adjacent to the main house.

It has carried out a study of the local native species, creating a series of walking trails have generated three distinct areas.

The first is characterized by an olive tree that becomes almost a sculptural element of the garden and leading to the barbecue area in a restored artefact that once served as an area for feeding pigs.

The second area in front of the main entrance remaining free from trees in the centre to make way for future construction of a swimming pool.

The third area is characterized by a courtyard surrounded by flower beds with ornamental plants (Sophora, fruit trees etc..) and larch that create a barrier to the neighbours to preserve the intimacy of the house.

The house facing bricks and pedestrian trails in terracotta tiles create a fusion between the home and garden.



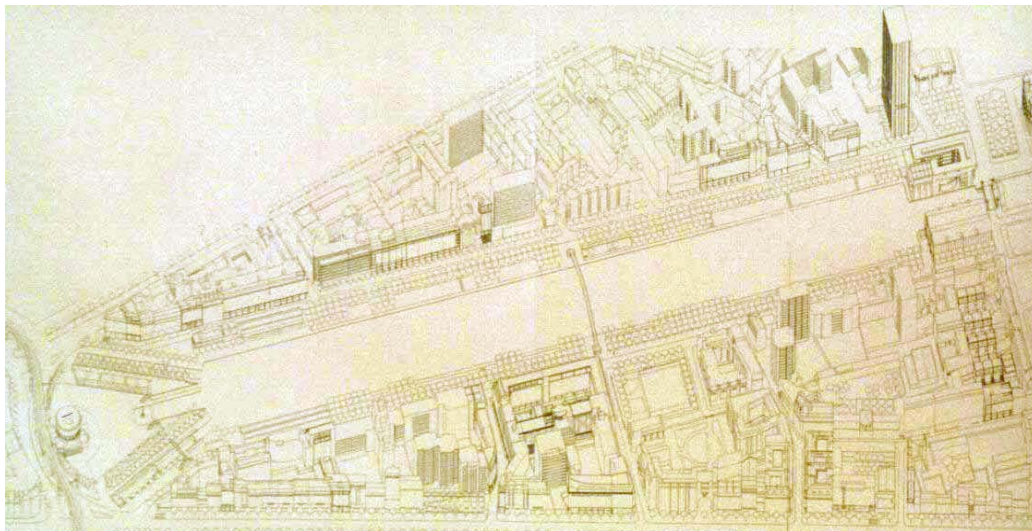
Views of different areas of the garden of the house



A New School of Fine Arts

Paris - France (Architecture Competition)

"L'Ecole de Beaux Arts " is conceived as a building open to the public, a place to stop between the long pedestrian axis that extends from the Ledoux Rotunda and the City of Science. Also its shape pays homage to the Tourette of Le Corbusier, creating a courtyard dominated by small amphitheatre and closing out towards the busy rue de Crimée and the horrible Tour de Flandre result of real estate speculation of the years 60/70. The design choices that are made on the assumption that we want to create an architecture that is involved in the urban configuration of the site, without being mediated by signs upsetting the sober character and uniform, typical of this area of Paris.



General perspective view of the urban site - Elevation/section of the building



Model of the project site in the "Bassin de la Vilette" with the building designed highlighted in red (amphitheatre, library) and blue (workshops).



The urban context



Models of the building



Models of the building



Sketches of the interior spaces

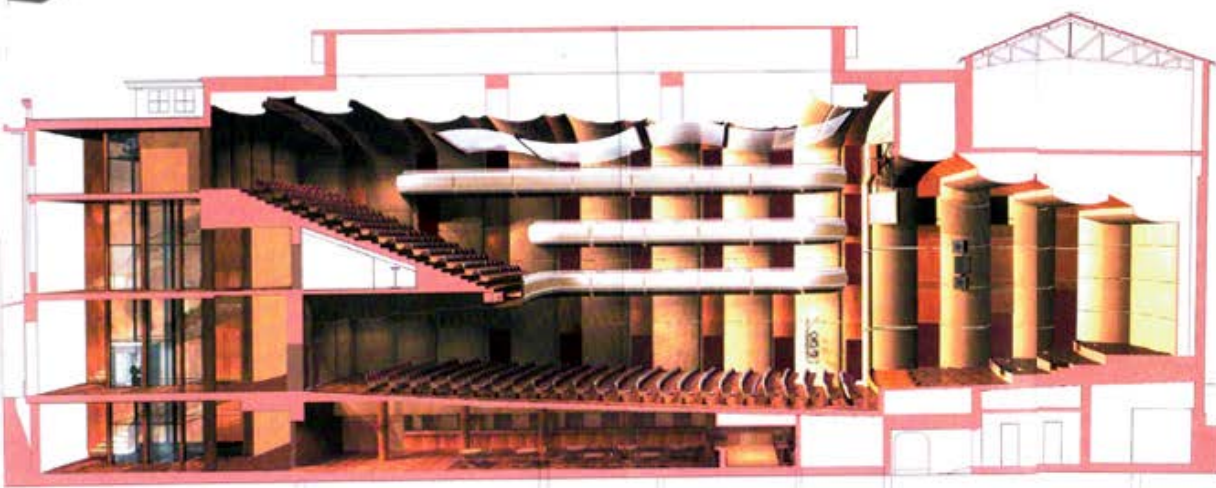
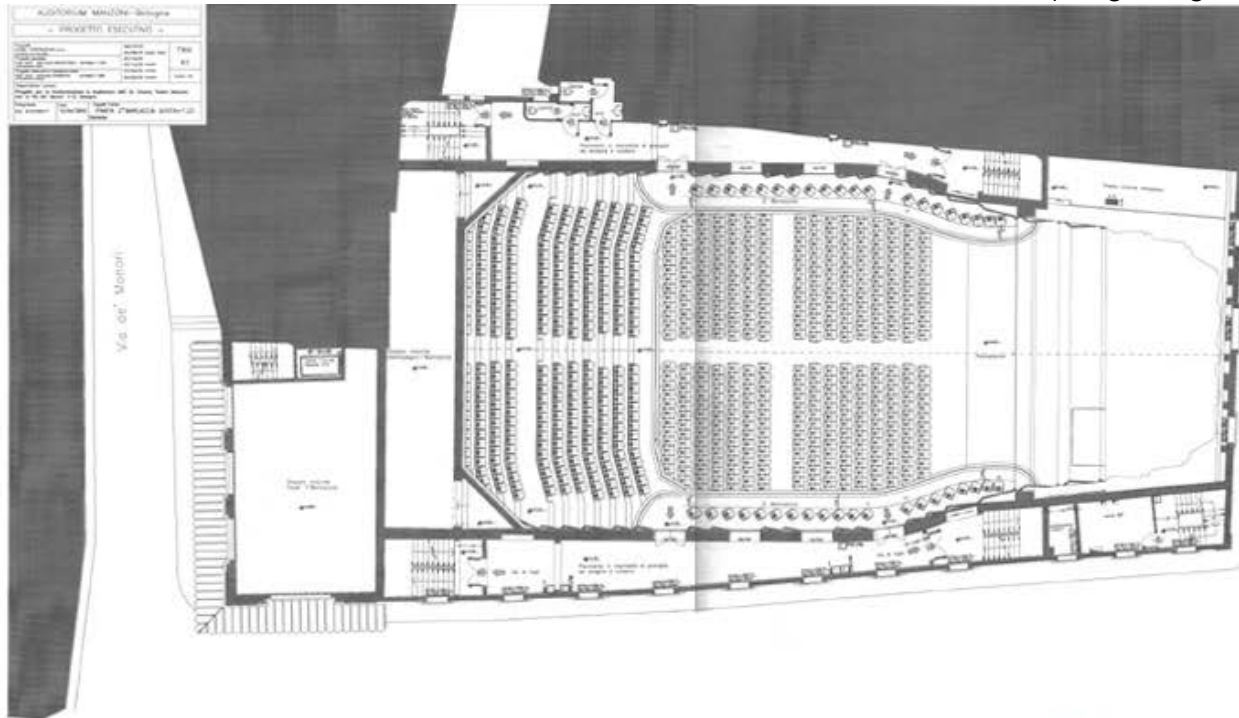


Theatre / Auditorium Manzoni

Bologna - Italy

(Collaboration with COGEI S.r.l. & Architects G.Marzorati / G. Zamboni)

The architectural project has allowed so the recovery of the structure of the theatre, aimed at the preservation of aesthetic and acoustic requirements of the building, and the transformation into a modern and functional space. Among the stylistic elements to preserve the ingenious mechanism for opening the ceiling, today enhanced by a great glass surface that highlights the precious frescoes of the vault.



Floor plan and longitudinal section



Photos of the theatre finished with the acoustic ceiling glass



Above: details of the necessary scaffold for the support and expansion of the proscenium.

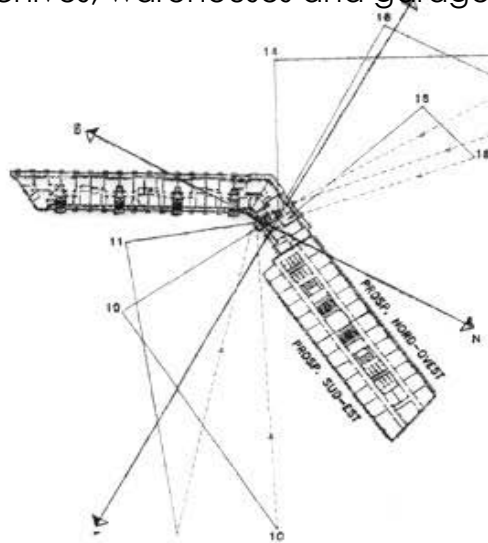
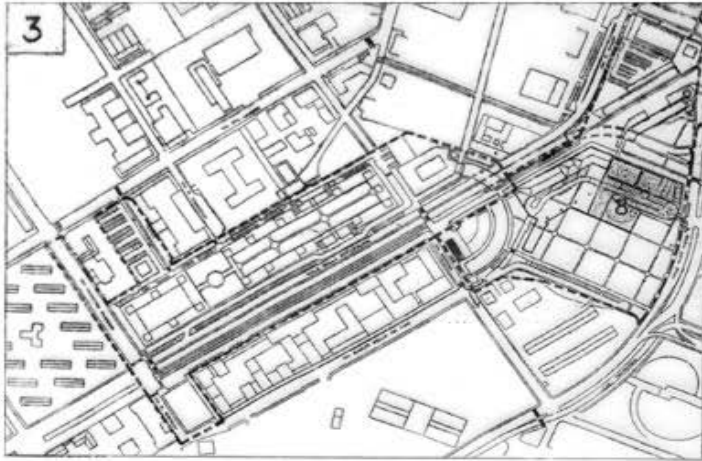
Below : photo on site with the construction site manager.

Office Building Fair

Bologna - Italy

(Collaboration with COGEI S.r.l. & Arch. G.Masi)

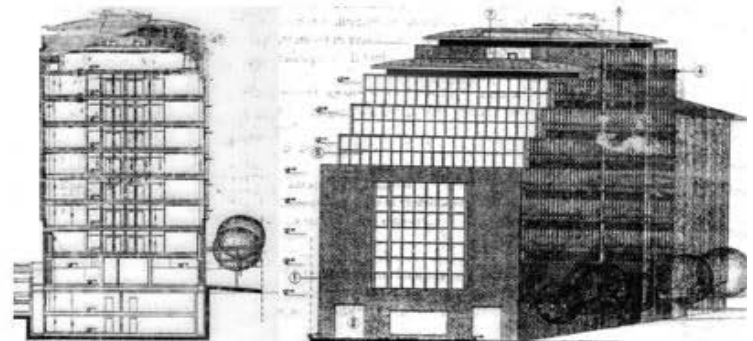
The building is located in the vicinity of the Bologna Exhibition Centre designed by the Arch. Kenzo Tange. This new building is characterized by the pleasant contrast between large surfaces modular curtain, shading elements with both horizontal and vertical, and the inter-mediation of the walls made of brick "exposed face". The building has built 10,500 sqm of offices, developed out of ten floors above ground, plus the preparation of two underground floors for archives, warehouses and garages.



Details of the facade of the building



the building in the site context and perspective view



Section

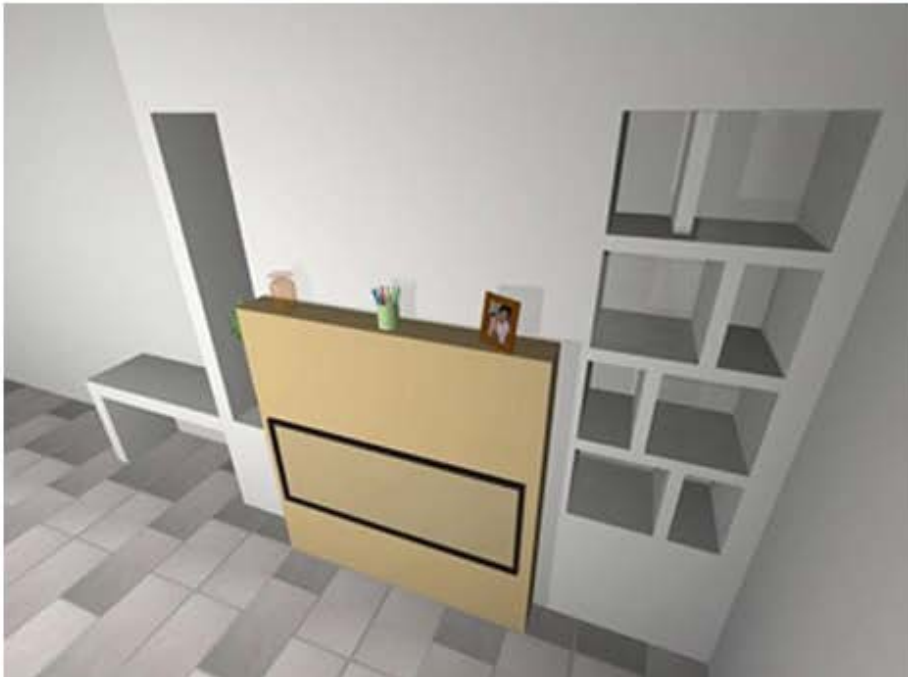
Side elevation

Fireplace

Private Client



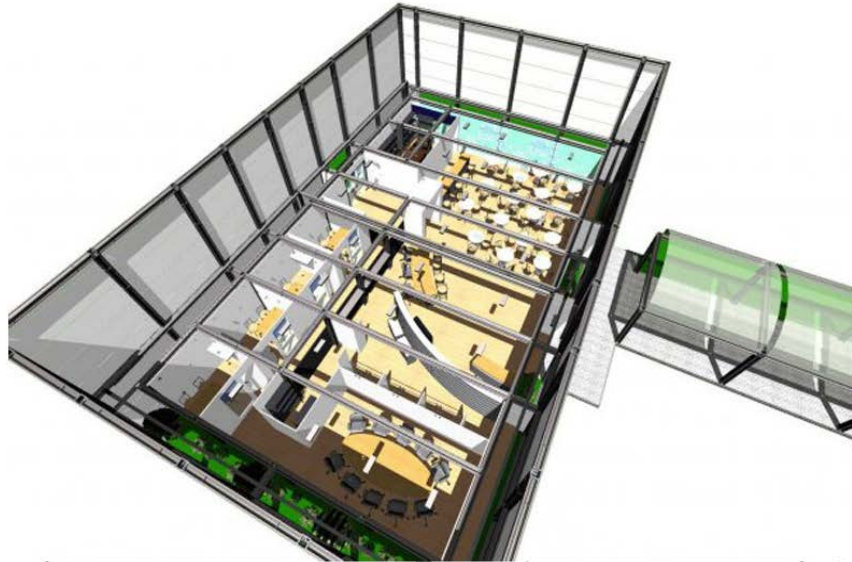
FIREPLACE IN PRIVATE HOME
FERRARA-ITALY



Fayat Pavilion

BAUMA / Munich - Germany

(Collaboration with ARREDOSTANDAREA s.r.l. & Arch. M. Matteucci)



Internal perspective view and general layout of the pavilion.

Bauma in Munich is the number One international trade fair for construction machinery, building material machines, mining machines, construction vehicles and construction equipment. Held every three years at Messe München the event breaks its own records each edition.

The pavilion of 200 sqm has been designed and built with an aluminium patented modular system that is characterized by a beam / pillar-shaped cross section that supports the curtain wall panels of MDF and the roof in PVC and polycarbonate. .



The installation of the pavilion and the final realization.

Benetton Shop

Treviso / Italy

(Collaboration with Gatti Furniture)



The main space of the store, the white floor give shine at the indoor environment and contrasts with the color of clothing.

The intention of this project was to create a space to exposing clothing (sweaters, dresses, shirts etc.) signed by the prestigious brand United Color of Benetton. According to the client brief which favors a minimalist design, We wanted to create a neutral space characterized by floor and white walls that let the same color of the clothes give heat to the exhibition space. The backlight posters and the natural clear color of the wood of the furnitures let it be the product itself to communicate with the customer. The lighting points creates brightness in the polished white concrete floor that becomes almost a mirror.



The repetition and the order of display shelves near the giant backlit wall.

Richmond Disco/Pub

(Collaboration with Interior Designer A. Manovel)



The lighting gives the bar counter different colors.

With this project we wanted to give the interior a resemblance to the typical places in Las Vegas characterized by colored lights and reflective materials with a taste a bit retro.

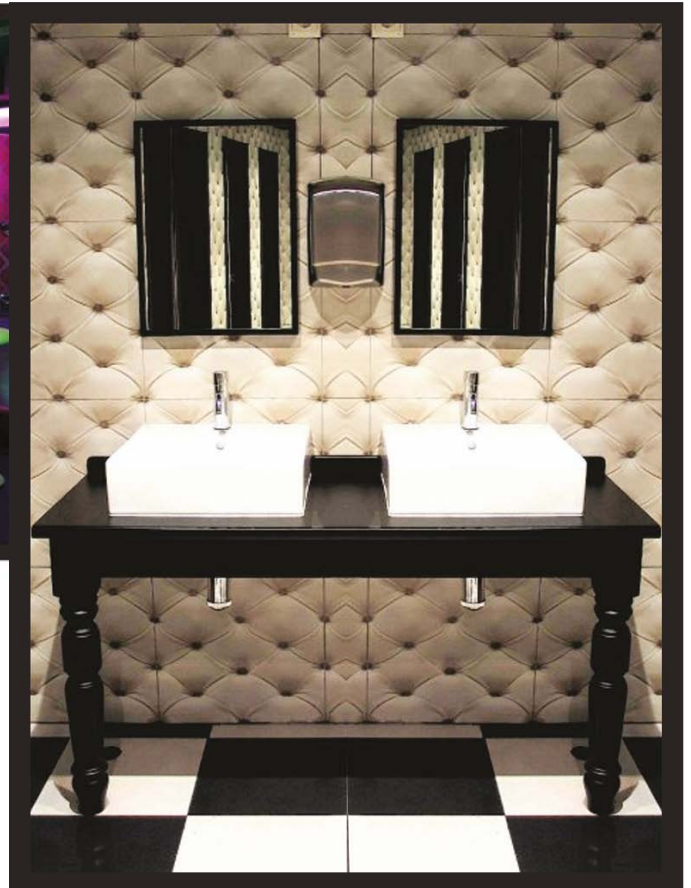
The area of the toilets instead we wanted to differentiate using classic colors like black and white.



The relaxation area and dance



The different floor levels in the private sitting areas



The bathroom areas with different finishes

Matteo Borsetti Architects

Phone +44 (0) 20 3078 9830

Email info@matteoborsetti.com

Web www.matteoborsetti.com

The logo consists of the letters 'MBA' in a bold, orange, sans-serif font, centered within a solid black square.